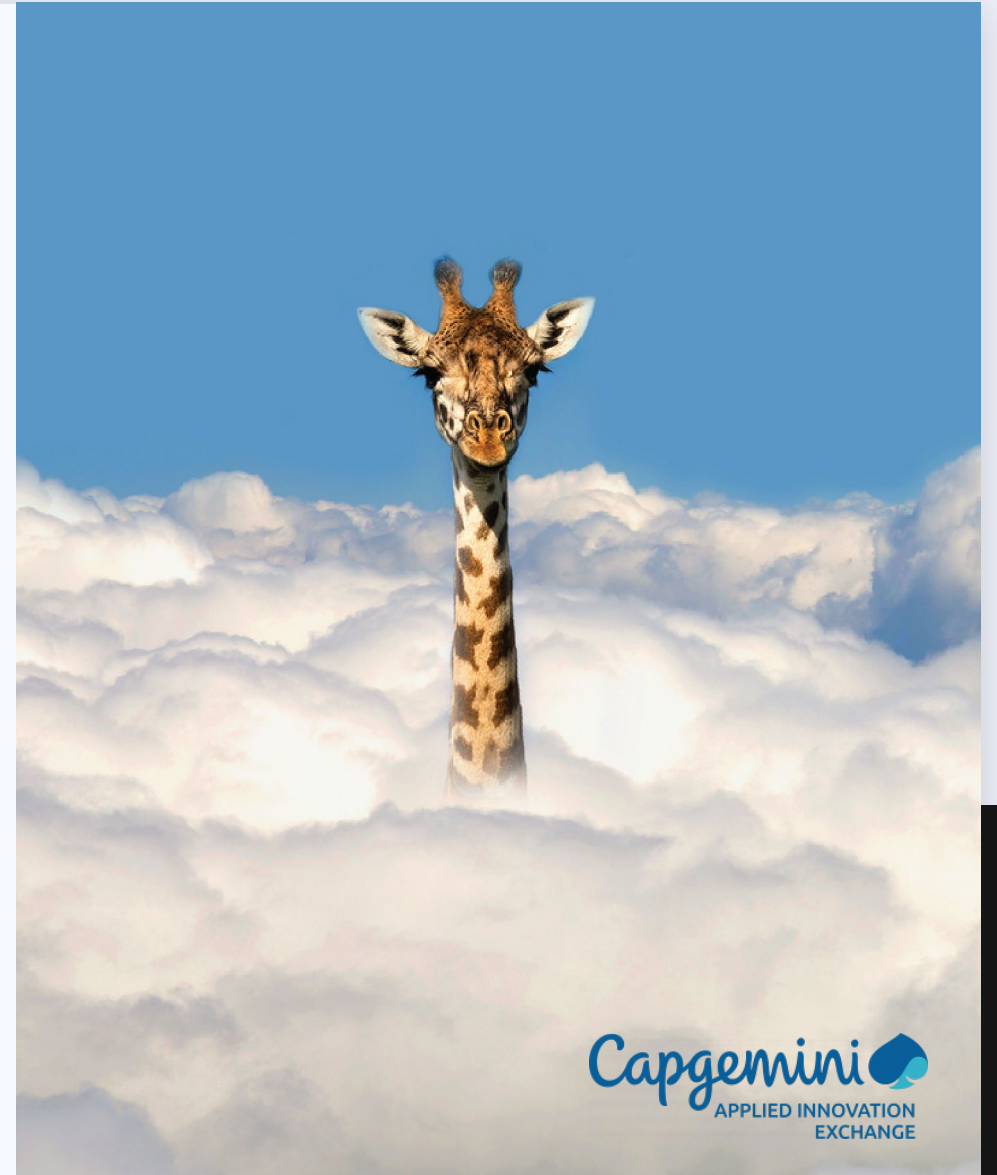


# BORING BUREAUCRACY OR DRIVER OF DIGITAL DISRUPTION

PUBLIC SECTORS PART IN THE 4<sup>TH</sup>  
INDUSTRIAL REVOLUTION

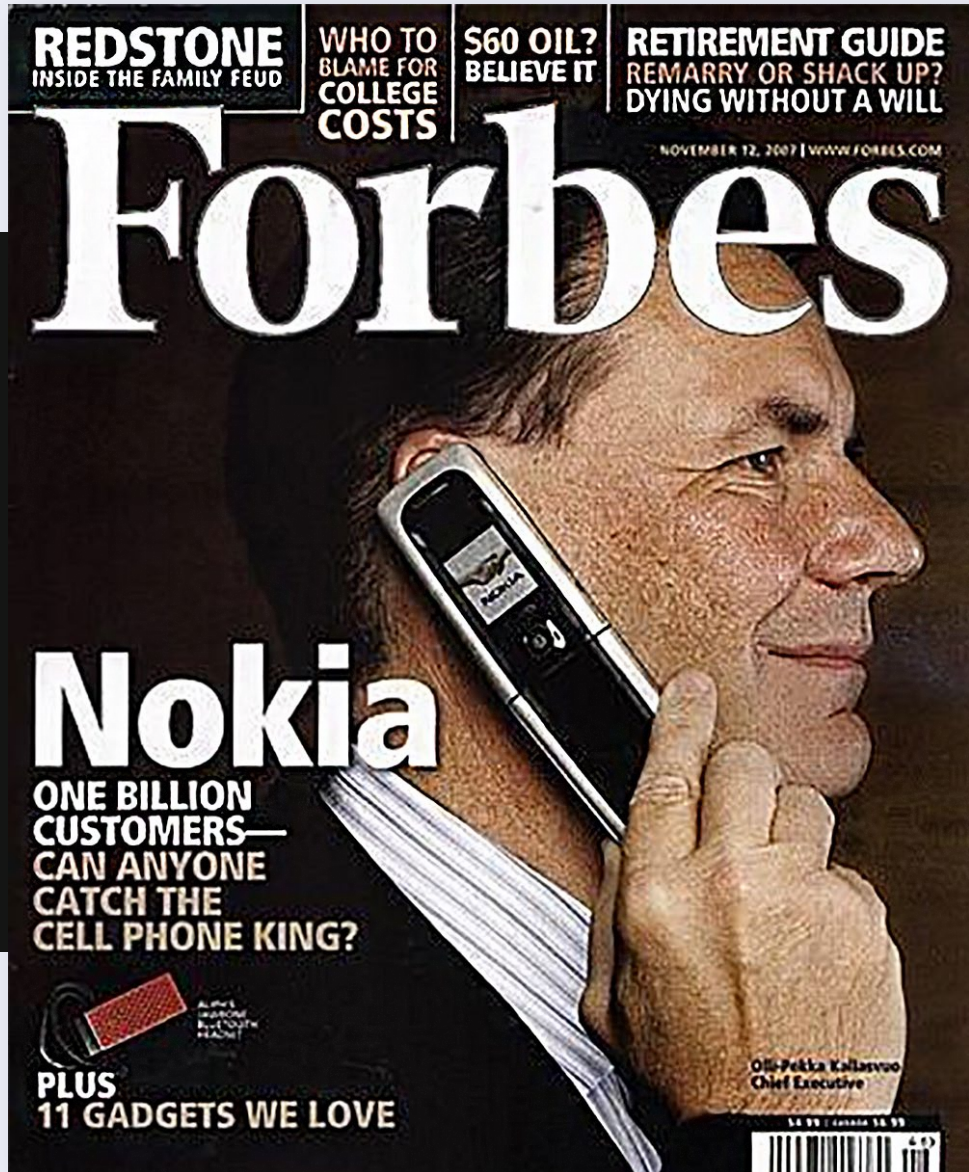


Capgemini  
APPLIED INNOVATION  
EXCHANGE

# MANNEN MED MICKEN

- Center for Wireless Internet Integration. 1999 års surfplatta. Konkurs.
- Ericsson. Blockgruppsansvarig.
- Sony Ericsson. Animeprojektet.
- Sony Mobile. Global Verification Automation Architect
- Going Helthtec. Grundare. Likviderat.
- Högskolan Kristianstad. Innovationsrådgivare
- Helsingborgs stad Vård- och Omsorgförvaltningen. Innovationsledare
- Applied Innovation Exchange @ Capgemini. Emerging tech innovation leader





Disruption is high

96%

believe their company is at risk of being disrupted by emerging technologies & companies

85%

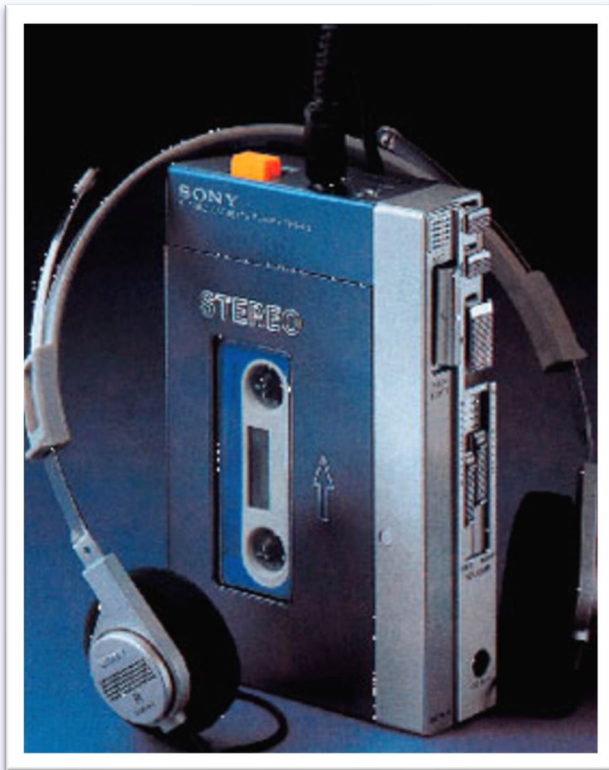
say innovation is very important, yet 78% of innovation portfolios are allocated to continuous innovation instead of disruptive risks

Capgemini Research Center, 2017

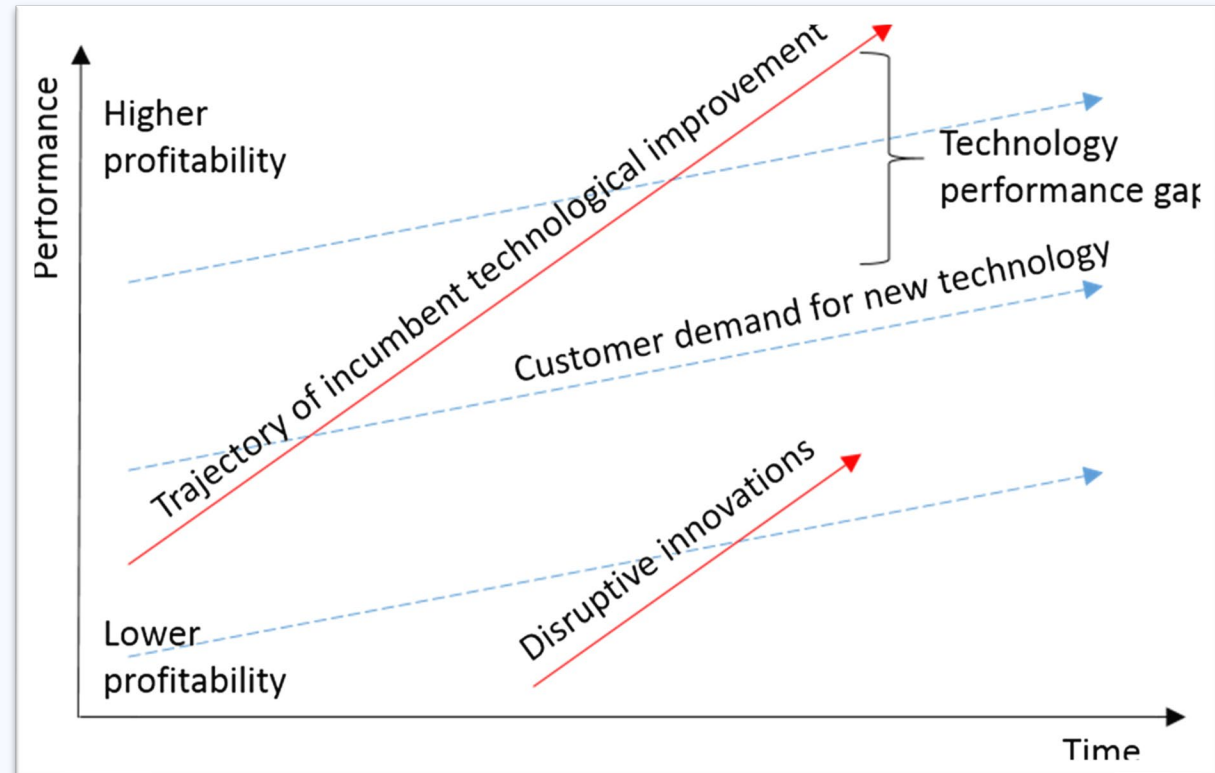




# THE DISRUPTIVE INNOVATION MODEL



Sony TPS-L2 1979



Christensen, C.M., McDonald, R., Altman, E.J. and Palmer, J.E. (2018), Disruptive Innovation: An Intellectual History and Directions for Future Research. *Jour. of Manage. Stud.*, 55: 1043-1078.

# VARNINGSSIGNALER

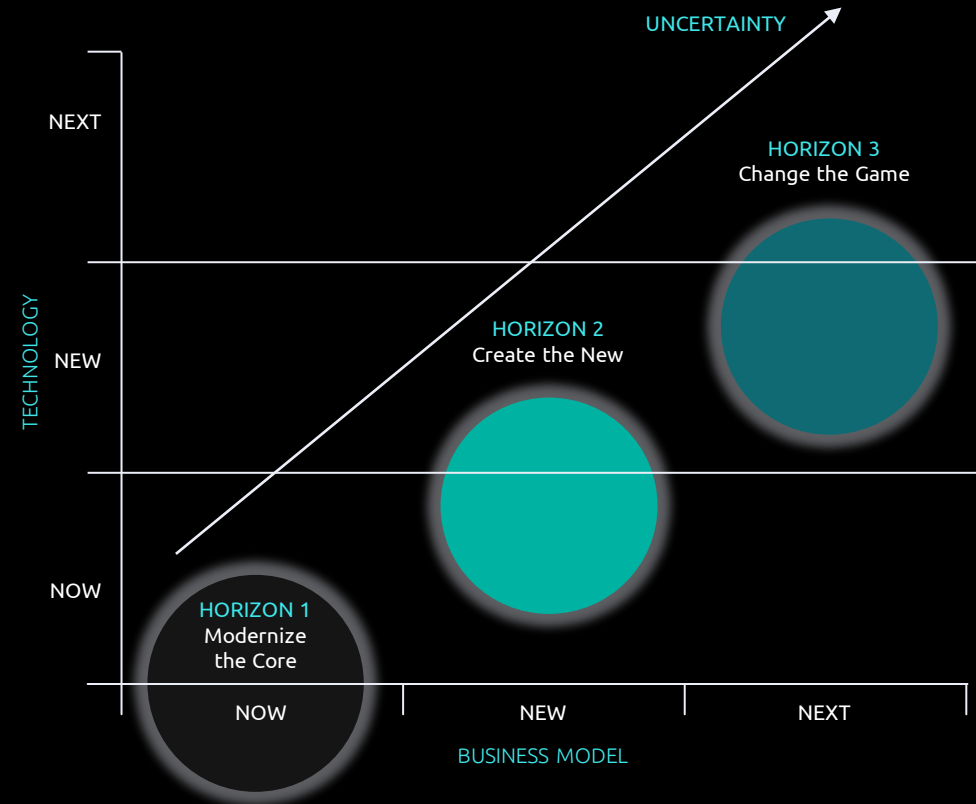
"Disruption enters from below while the larger actors are overserving the premium customers with sustaining innovation"

- Är du en av de stora och "äldre" aktörerna?
- Är din affärsmodell traditionell?
- Riktas mycket utvecklingskraften mot premiumsegmentet?
- Har du mycket vertikala lösningar?
- Är din grundläggande teknologi tillgänglig för små spelare?



# VARFÖR ÄR DET SÅ SVÅRT?

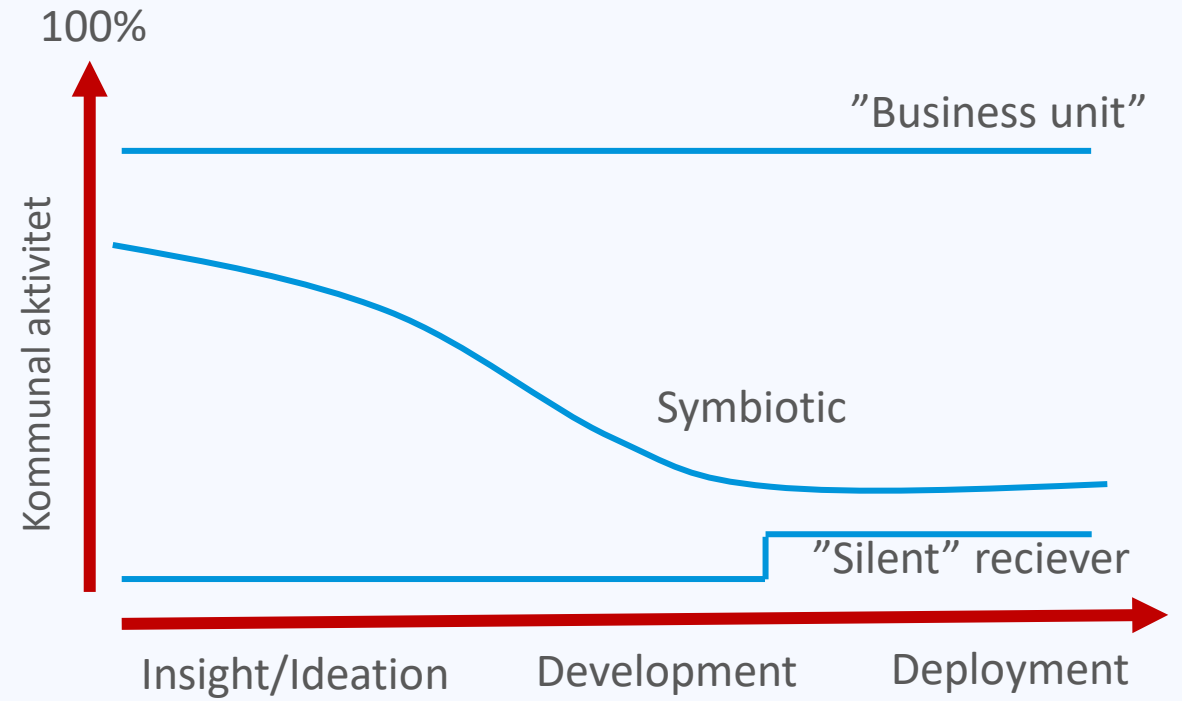
*“Great companies are disrupted not because they get sloppy, they get disrupted because they do everything right.”*





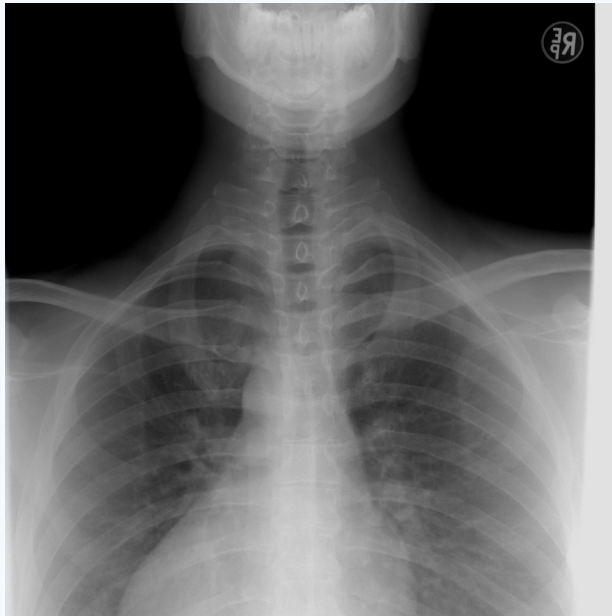


## THEME INFO





# MÖJLIGHETER



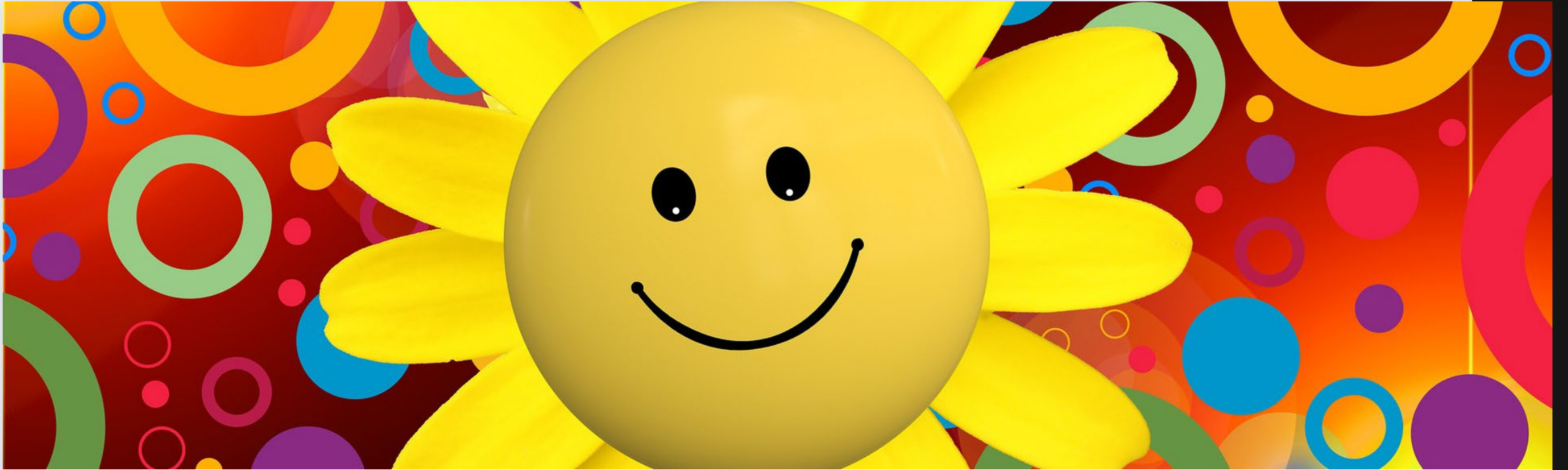
AI



IOT



CLOUD



Tack för att ni lyssnade.

Connecta gärna på LinkedIn så kan vi fortsätta samtalet!

<https://www.linkedin.com/in/johan-mullern-aspegren/>

